

YEAR 2014

CORE STATION 1025

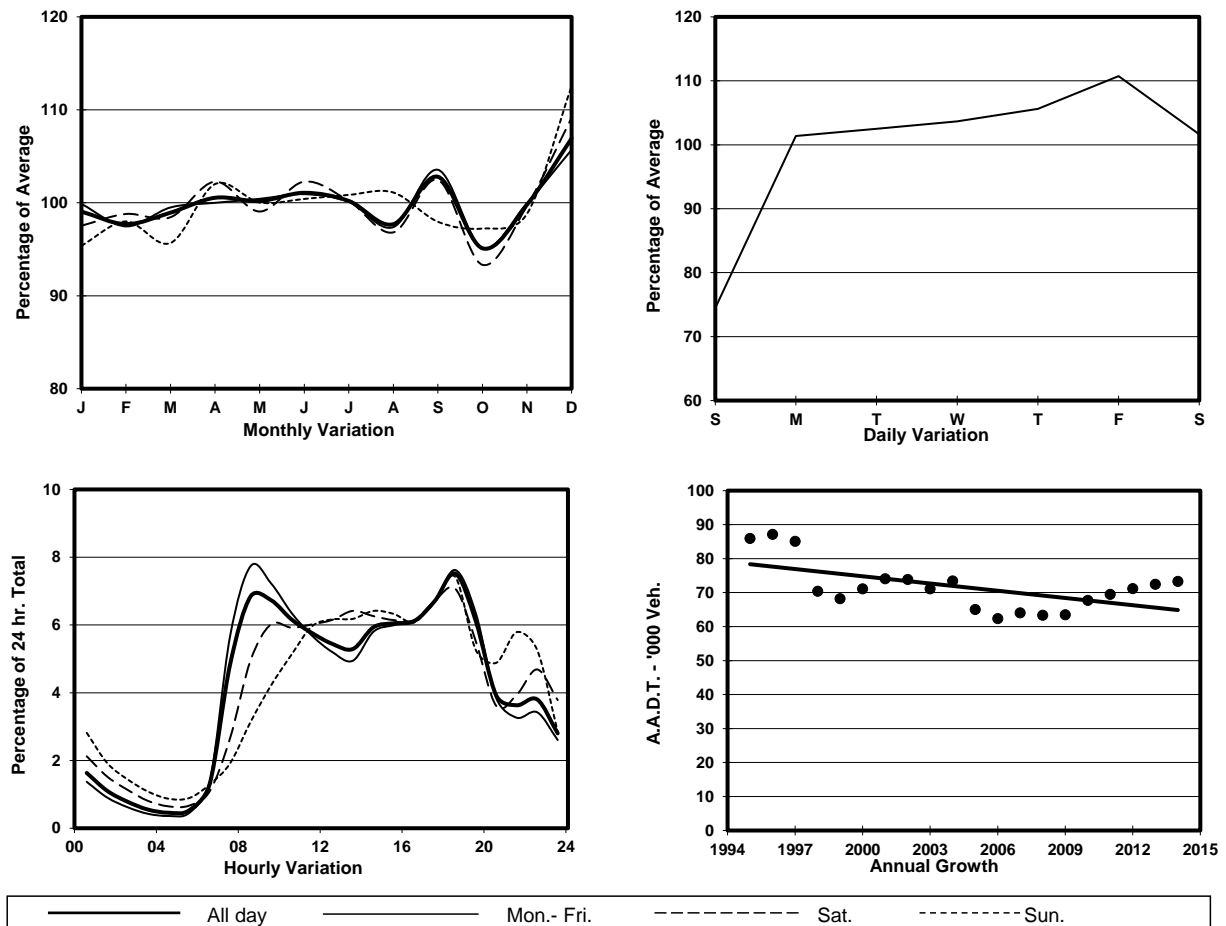
ROAD NETWORK MAJOR

ROAD TYPE URBAN TRUNK ROAD

LINK EASTERN HARBOUR CROSSING (from TOLL PLAZA to SOUTH PORTAL)



1. TRAFFIC FLOW VARIATION AND GROWTH



2. TRAFFIC CHARACTERISTICS (BY DIRECTION)

Parameter	All - Day	Mon. - Fri.	Sat.	Sun.
SOUTH BOUND				
A.A.D.T.	36170	38450	37290	27110
R 12 / 24 - %	75.4	77.2	72.5	67.3
R 16 / 24 - %	91.5	92.4	89.4	87.9
AM Peak Hour	0900-1000	0800-0900	0900-1000	0900-1000
One-way flow at AM peak hour	2670	3080	2640	1310
T - % (AM)	-	10.8	-	-
PM Peak Hour	1800-1900	1800-1900	1800-1900	1800-1900
One-way flow at PM peak hour	2670	2880	2550	2040
T - % (PM)	-	5	-	-
Prop.of commercial vehicles - 16 hr.	-	7.4	-	-
NORTH BOUND				
A.A.D.T.	37130	39430	38100	28320
R 12 / 24 - %	71.4	73	68.5	64
R 16 / 24 - %	90.2	91.5	87.1	85.8
AM Peak Hour	0800-0900	0800-0900	0900-1000	0900-1000
One-way flow at AM peak hour	2410	2950	1900	1030
T - % (AM)	-	6.6	-	-
PM Peak Hour	1800-1900	1800-1900	1800-1900	1800-1900
One-way flow at PM peak hour	2840	3060	2780	2070
T - % (PM)	-	5.6	-	-
Prop.of commercial vehicles - 16 hr.	-	7	-	-

3. OTHER INFORMATION AND COMMENT

4. Vehicle classification and occupancy - Monday to Friday

Time		Class of vehicle									
		Motor	Private	Taxi	Private	PLB	Goods veh.		Non	Fr. Bus	
		Cycle	Car		LB		Light	M & H	Fr. Bus	SD	DD
0700-0800	Pro	5.4	48.4	25.3	1.1	0.6	9.6	2.7	2.2	0.0	4.6
	Ocp	1.1	1.5	1.9	6.3	17.0	1.5	1.4	27.9	0.0	64.3
0800-0900 Peak hour	Pro	3.9	59.5	14.8	0.4	1.0	11.7	1.9	2.9	0.1	4.0
	Ocp	1.1	1.4	2.2	7.2	16.5	1.9	1.5	37.8	59.0	76.8
0900-1000	Pro	1.7	50.8	21.8	0.5	0.4	16.9	4.2	1.3	0.0	2.6
	Ocp	1.1	1.3	2.1	2.0	15.7	1.8	1.5	24.0	0.0	43.2
1000-1100	Pro	2.7	44.4	20.0	0.7	0.3	24.6	4.5	0.4	0.1	2.4
	Ocp	1.1	1.5	2.0	2.4	10.3	1.8	1.4	18.8	19.0	35.4
1100-1200	Pro	2.3	42.9	23.9	0.6	0.2	21.0	6.1	1.0	0.1	2.0
	Ocp	1.1	1.4	1.9	3.0	15.5	1.7	1.5	9.6	17.3	33.6
1200-1300	Pro	3.6	50.5	20.8	1.1	0.4	17.4	2.9	1.2	0.1	2.0
	Ocp	1.1	1.5	2.1	4.6	8.3	1.8	1.4	10.4	21.0	30.6
1300-1400	Pro	1.8	46.8	21.1	0.7	0.4	21.1	4.4	1.2	0.1	2.4
	Ocp	1.0	1.5	2.1	3.3	8.3	1.6	1.3	21.0	16.3	35.1
1400-1500	Pro	2.5	45.7	23.0	1.4	0.1	19.2	4.7	1.5	0.1	1.8
	Ocp	1.0	1.5	2.2	2.6	10.0	1.8	1.4	9.3	20.0	29.9
1500-1600	Pro	2.3	47.1	19.1	1.2	0.2	22.3	4.6	1.0	0.1	2.3
	Ocp	1.0	1.5	2.1	6.0	15.5	1.8	1.5	10.0	16.5	30.3
1600-1700	Pro	4.3	47.6	18.6	1.1	0.4	20.5	3.5	1.5	0.0	2.5
	Ocp	1.2	1.4	1.9	3.2	9.2	1.8	1.5	6.2	0.0	26.4
1700-1800	Pro	4.2	54.7	16.0	1.0	0.3	15.8	3.6	1.4	0.0	3.0
	Ocp	1.1	1.4	2.1	3.2	12.5	1.8	1.4	7.9	0.0	36.9
1800-1900	Pro	5.4	63.8	15.3	0.3	0.9	9.0	1.6	1.0	0.0	2.8
	Ocp	1.1	1.4	2.2	3.8	17.0	1.7	1.4	23.5	0.0	61.5
1900-2000	Pro	2.6	68.8	18.5	0.1	0.8	4.8	0.5	0.9	0.0	3.0
	Ocp	1.1	1.4	2.5	1.0	14.3	1.6	1.4	7.5	0.0	57.9
2000-2100	Pro	2.9	67.3	19.4	0.0	0.5	4.2	1.4	0.0	0.0	4.3
	Ocp	1.0	1.5	2.3	0.0	15.5	1.7	1.5	0.0	0.0	41.3
2100-2200	Pro	3.6	57.6	28.7	0.2	0.9	3.8	1.5	0.2	0.0	3.6
	Ocp	1.0	1.5	2.3	2.0	17.0	1.4	1.4	1.0	0.0	48.1
2200-2300	Pro	2.6	56.1	31.8	0.1	0.6	4.5	0.9	0.4	0.0	3.0
	Ocp	1.3	1.6	2.4	1.0	16.3	1.9	2.2	5.3	0.0	47.8
16 hours	Pro	3.2	53.5	20.3	0.7	0.5	14.6	3.1	1.2	0.1	2.8
	Ocp	1.1	1.4	2.1	3.8	14.5	1.8	1.4	19.7	20.8	47.8

Legend

Pro. Proportion of vehicles in % (Sum may not add up to 100% due to figure rounding)
Ocp. Average occupancy of vehicles
M&H Medium and Heavy